

SEWER AUTHORITY MID-COASTSIDE
Staff Report

Subject / Title

Manager's Monthly Report – July 2010

Staff Recommendation:

None, this is an informational item.

Fiscal Impact:

None.

Discussion/Report:

Attached please find the Manager's Monthly Report for July 2010, which includes the Monthly Flow Report, Financial Statement, Monthly NPDES Data, Collection System Data, Wet Weather Flow Management Program Project Funding Opportunities and Recycled Water Program Funding Opportunities.

BLANK

Sewer Authority Mid-Coastside
MANAGER'S REPORT

A Monthly Report to the Board

JULY 2010

Key Indicators of Performance

NPDES Permit Violations:	0
Accidents, Injuries, etc:	None
Reportable Spills Cat 1:	0
Reportable Spills Cat 2:	0
Total Expenses (% of budget)	2.91%

Flow Report (See Attachment A)

Half Moon Bay	0.700	46.3%
Granada SD	0.515	34.0%
Montara W&SD	0.288	19.0%
Other	<u>0.130</u>	<u>0.7%</u>
Total	1.513	100.0%

HIGHLIGHTS

In July 2010, staff had SAM's Ocean Outfall inspect as part of the annual maintenance/winter preparations program. This year all was well except for a tear in one riser. Staff has ordered a replacement and will have it installed as soon as possible.

Administration

In July 2010, there was 1 (one) SAM Regular Board meetings, on July 26, 2010. In July 2010, there were no public records requests.

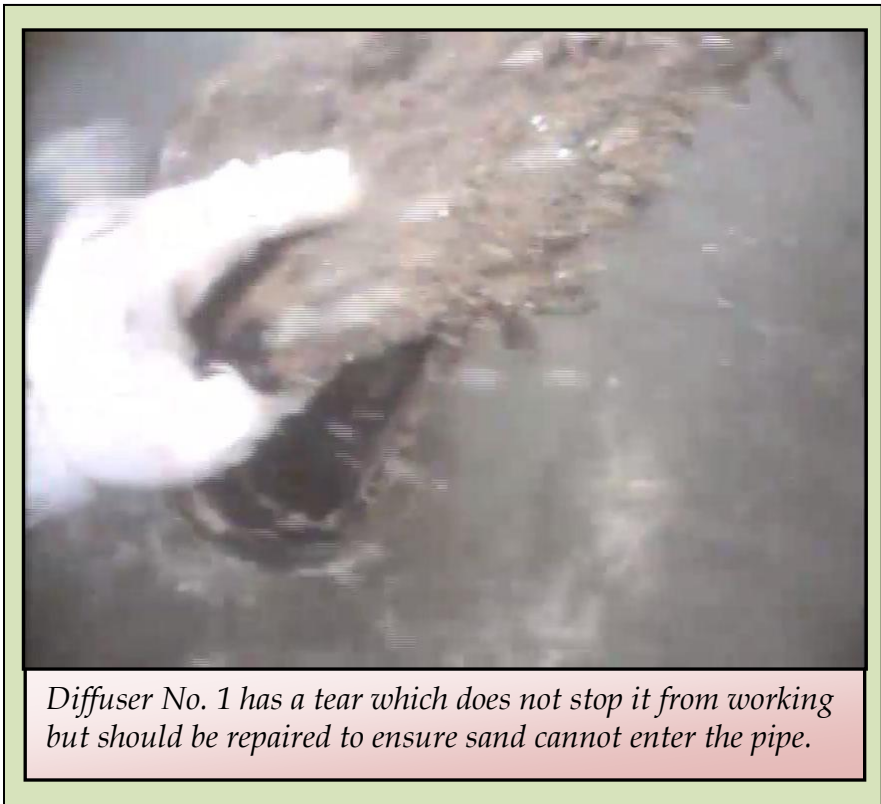
Media Coverage

During the month of July 2010, there were no media articles published regarding SAM.

Personnel

There were no grievances filed and no SAM meetings with Local 39 representatives in July 2010.

There are no SAM staff anniversary dates in the month of July 2010.



SAM has continued with retainment of temporary assistant from Accountemps for records retention, assistance to the admin services supervisor and technical services supervisor for various tasks. No permanent new hires occurred during the month of July 2010.

Financial

The Financial Statement for July 2010 reflects expenditures in the amount of \$123,611.45 (See Attachment B). The July 2010 Financial Statement reflects 2.91% of the budget expensed at 8.33% of the fiscal year. Spending trends in the early part of the fiscal year do not allow for accurate projection of budget amounts being expensed to the end of FY 2010-11. Staff expects spending could catch up to some budget amounts in the final June 30, 2011 financial statement.

The July LAIF statement is attached to the July 30, 2010 Financial Statements. The July 30, 2010 statement reflects quarterly interest earnings of \$5,245.02. The beginning LAIF balance for July 2010 was \$3,783,271.61 and the ending balance for July 2010 is \$3,788,516.63. SAM staff continued with uncashed check notifications, stop payment orders.

The final Pre-Audited June 30, 2010 Financial Report reflects expenditures in the amount of \$4,025,689.17 (See Attachment B). The final Pre-Audited June 30, 2010 Financial Report reflects 85.7% of the budget expensed at 100% of the fiscal year.

OPERATIONS, COLLECTIONS, AND MAINTENANCE

Operation and Maintenance

All systems ran well during the month of July 2010. The NPDES Data for the month of July 2010 is included (Attachment C). There were no NPDES permit non-compliances during the month of July.

Collections

In July 2010, the Collections Maintenance crew cleaned approximately 55,895 feet of sewer line. Additionally, Collections staff responded to 6 callouts. The latest collection system data report is attached (Attachment D). There were no SSOs during the month of July.

Trucked Waste

In July 2010, forty-one (41) deliveries (approximately 10,875 gallons) of trucked waste were discharged at the SAM plant. This represents a total of \$1087.50 in gross revenue.

Safety

There were no work-related injuries in July 2010. There are no employees on SAM disability leave. There have been no work related accidents, injuries, or illnesses at SAM since April 16, 2007. Through July 30, 2010, the SAM Plant has worked 1202 days without a lost time accident.

Attachments: A – Flow Report
B – Financial Statement
C – Monthly NPDES Data
D – Collection System Data
E – Wet Weather Flow Management Program Project Funding Opportunities
F – Recycled Water Project Funding Opportunities